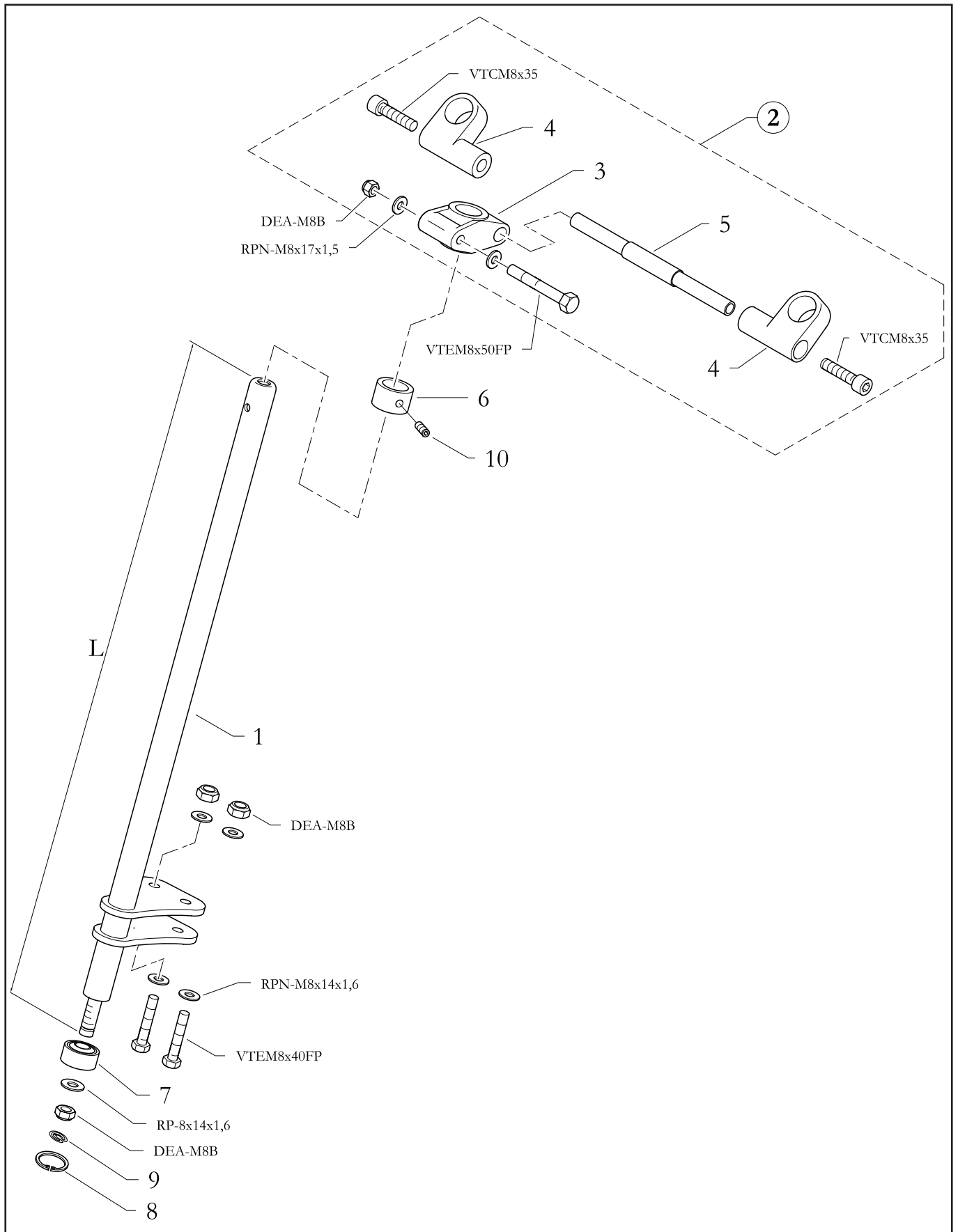


# PIANTONI STERZO - STEERING COLUMNS

## GR.M.03/010



## PIANTONI STERZO - STEERING COLUMNS

## GR.M.03/010

Pos.	Cod. Articolo	Descrizione	Description
1	10.4930.00	PIANTONE STERZO L350	STEERING COLUMN L350
1	10.0780.00	PIANTONE STERZO L420	STEERING COLUMN L420
1	10.4681.00	PIANTONE STERZO L480/B	STEERING COLUMN L480/B
1	10.0481.00	PIANTONE STERZO L490	STEERING COLUMN L490
2	10.0833.00	GRUPPO SUPP.PIANTONE STERZO 120	STEERING COLUMN SUPPORT ASSY. 120
2	10.1643.00	GRUPPO SUPP.PIANTONE STERZO 100	STEERING COLUMN SUPPORT ASSY. 100
3	20.0750.18	SUPPORTO NYLON PIANTONE	NYLON SUPP. FOR STEERING COLUMN
4	20.3848.10-OR	PIPETTA SUPP. PIANTONE L35	HALF SUPP. L35 STEERING WHEEL
4	20.4997.10-LU	PIPETTA SUPP. PIANTONE L45	ALUM. HALF SUPP. L45 STEERING COLUMN
5	20.3849.06	TIRANTE SUPP. PIANTONE L75	TIE ROD FOR STEER. COLUMN SUPP. L75
6	20.0261.10-OR	ANELLO FERMO PIANTONE 125	STOP RING FOR STEERING COLUMN 125
7	40.0578.00	SNODO SFERICO M8	BALL JOINT M8
8	AAI-22	ANELLO D'ARRESTO UNI 7437	CIRCLIP UNI 7437
9	40.0217.00	ANELLO D'ARRESTO 3,1x11x1	CIRCLIP 3,1x11x1
10	40.3684.00	GRANO 6x6 DIN 913	DOWEL 6X6 DIN 913