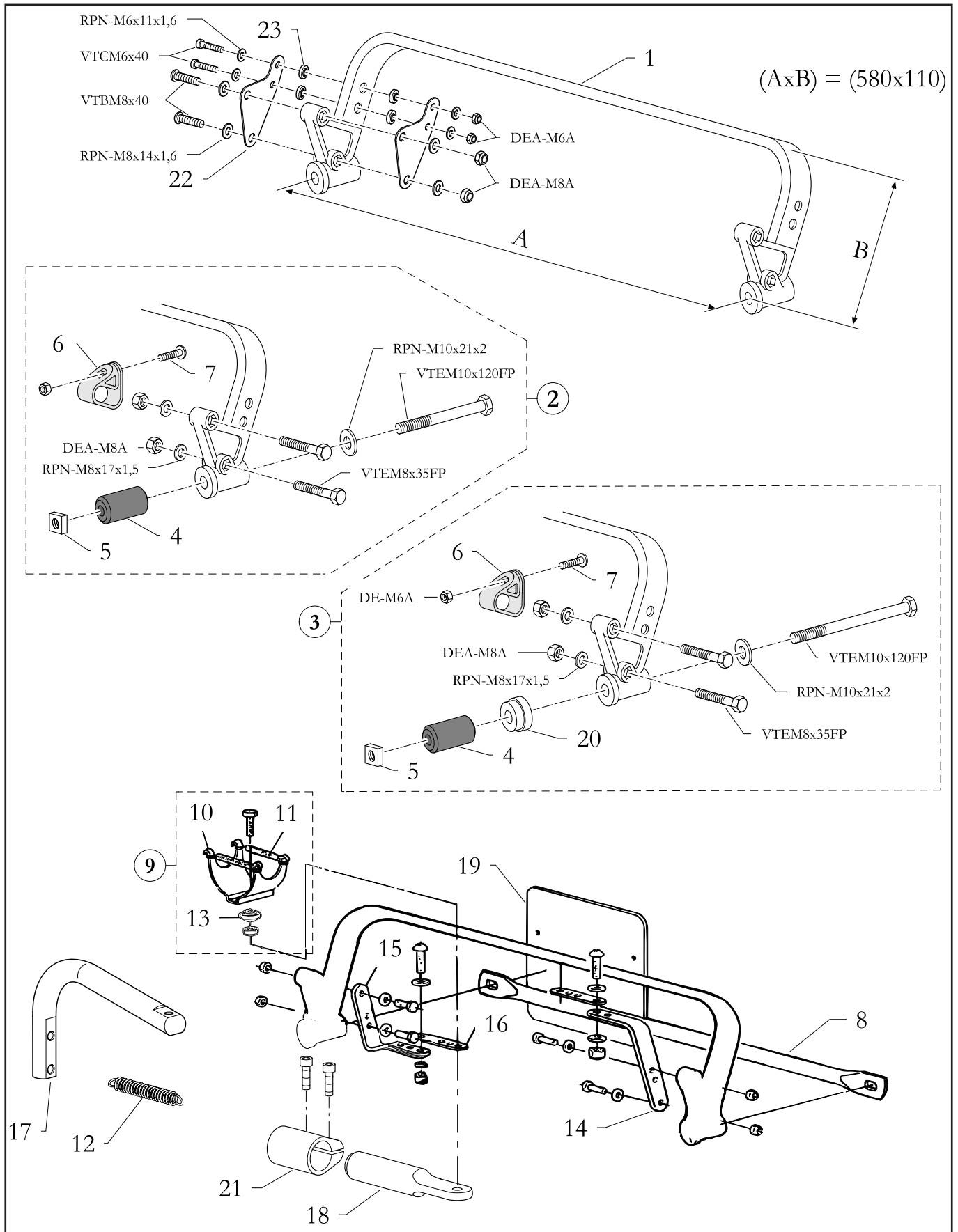


PARAURTI POSTERIORI - REAR BUMPERS

GR.M.03/033



PARAURTI POSTERIORI - REAR BUMPERS

GR.M.03/033

| | | | |
|----|---------------|---------------------------------|------------------------------|
| 1 | 10.4990.00 | PARAURTI POST.USA B25-X | REAR BUMPER B25-X USA |
| 1 | 10.4103.00 | PARAURTI POST.540x150 | REAR BUMPER 540x150 |
| 1 | 10.1422.00 | PARAURTI POST.580x110 | REAR BUMPER 580x110 |
| 1 | 10.0527.00 | PARAURTI POST.580x150 | REAR BUMPER 580x150 |
| 1 | 40.7155.00 | PARAURTI POST.580 FIK03 | REAR BUMPER 580 FIK03 |
| 1 | 10.2187.00 | PARAURTI POST.620x110 | REAR BUMPER 620x110 |
| 1 | 10.0923.00 | PARAURTI POST.620x150 | REAR BUMPER 620x150 |
| 2 | 10.5249.00 | KIT MONTAG. PARAURTI POST. 28D | MOUNTING KIT REAR BUMPER 28D |
| 3 | 10.6112.00 | KIT MONTAG. PARAURTI POST. 30B | MOUNTING KIT REAR BUMPER 30B |
| 3 | 10.6113.00 | KIT MONTAG. PARAURTI POST. 32B | MOUNTING KIT REAR BUMPER 32B |
| 4 | 20.7003.20 | GOMMINO PARAURTI POSTERIORE 25 | RUBBER FOR REAR BUMPER 25 |
| 4 | 20.1094.20 | GOMMINO PARAURTI POSTERIORE 28 | RUBBER FOR REAR BUMPER 28 |
| 4 | 20.0332.20 | GOMMINO PARAURTI POSTERIORE 30 | RUBBER FOR REAR BUMPER 30 |
| 4 | 20.3181.20 | GOMMINO PARAURTI POSTERIORE 32 | RUBBER FOR REAR BUMPER 32 |
| 5 | 40.6453.00 | DADO PARAURTI POST. M8 | NUT FOR REAR BUMPER M8 |
| 5 | 40.0637.00 | DADO PARAURTI POST. M10 | NUT FOR REAR BUMPER M10 |
| 6 | 20.1591.18 | FASCETTA PORTANUMERO | CLAMP FOR REAR NUMBER PLATE |
| 7 | 40.0078.00 | VITE TESTA COMBINATA 6x20 | SCREW 6x20 |
| 8 | 20.3663.06 | RINFORZO PARAURTI POST. 540 | REAR BUMPER STIFFENING 540 |
| 8 | 20.2135.06 | RINFORZO PARAURTI POST. 580 | REAR BUMPER STIFFENING 580 |
| 8 | 20.2136.06 | RINFORZO PARAURTI POST. 620 | REAR BUMPER STIFFENING 620 |
| 9 | 10.2089.00 | ASS.CULLA SUPP.SILENZIATORE | MUFFLER CRADLE COMPL. |
| 10 | 20.0395.06 | CULLA SUPPORTO SILENZIATORE | MUFFLER CRADLE |
| 11 | 20.0223.06 | MOLLA SUPP.SILENZIATORE | EXHAUST SPRING |
| 12 | 20.3681.06 | MOLLA COLLETTORE SCARICO 30 | SPRING 30, EXHAUST MANIFOLD |
| 12 | 20.0918.06 | MOLLA COLLETTORE SCARICO 40 | SPRING 40, EXHAUST MANIFOLD |
| 12 | 20.0917.06 | MOLLA COLLETTORE SCARICO 50 | SPRING 50, EXHAUST MANIFOLD |
| 13 | 40.0334.00 | GOMMINO MARMITTA | RUBBER |
| 14 | 20.0123.06 | STAFFA SUPP.SILENZ.140x 80 | MUFFLER BRACKET 140x 80 |
| 15 | 20.1921.06 | STAFFA SUPP.SILENZ.100x100 | MUFFLER BRACKET 100x100 |
| 16 | 20.1612.06 | STAFFA CULLA MARMITTA 25x100 | MUFFLER CRADLE HOLDER 25x100 |
| 17 | 20.7325.10 | STAFFA CULLA MARMITTA HQ | MUFFLER CRADLE HOLDER HQ |
| 18 | 20.7285.10-OR | SUPPORTO ALLUMINIO SILENZIATORE | SILENCER ALUMINIUM SUPPORT |
| 19 | 20.0358.18-GL | PORTANUMERO | NUMBER PLATE |
| 20 | 20.1920.10-OR | DISTANZIALE 28 | SPACER 28 |
| 20 | 20.4515.10-OR | BUSSOLA PARAURTI POST. 30 | BUSHING REAR BUMPER 30 |
| 20 | 20.4516.10-BL | BUSSOLA PARAURTI POST. 32 | BUSHING REAR BUMPER 32 |
| 21 | 20.4524.10 | FASCETTA STABILIZZATORE 30 | STABILIZER CLAMP 30 |
| 22 | 20.7169.06 | RINFORZO PARAURTI POST. | REAR BUMPER STIFFENING |
| 23 | 20.1098.06 | DISTANZIALE 8x20x5,5 | SPACER 8x20x5,5 |